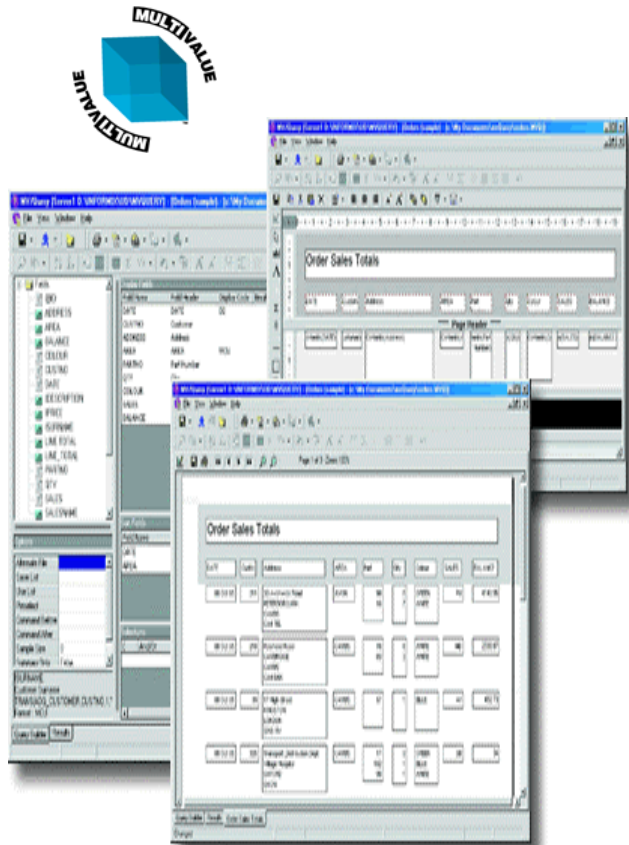


Finally ... an easy-to-use report writer & query tool for *Multivalued data that produces quality output*

mvQuery's easy drag-and-drop action and user-friendly features give everyone in the office the ability to build Multivalued data into reports, spreadsheets, charts, labels, and much more.

- ✓ True Windows Operation
- ✓ Understands Multivalued data
- ✓ User specified fonts and colors
- ✓ Sophisticated report designer with graphical output capabilities
- ✓ Standard definitions for letters, labels and other forms
- ✓ Output to desktop printer
- ✓ Output to network printers
- ✓ Export to Microsoft Office
- ✓ Save reports for future use
- ✓ Make reports available to others
- ✓ Powerful scripting language for complex job streams
- ✓ Off-line report preparation to conserve UniVerse seats
- ✓ And much more

mvQuery truly allows you to *extract the data you need into the form you want* in less time than it takes to ask a programmer to do it. Moreover, mvQuery uses your standard file dictionaries so there's no complex work setting up ODBC and similar connections.



Developed by MMT Computing plc.



Available from:

APTRON®
Enterprise Systems
for
Colleges and Universities

Value Added Reseller

Queries

- Queries are built using simple drag and drop technology
- Support for "Phrases" (locally defined groups of fields, sort & selection criteria)
- Support for "Joins" (references remote fields without the need for building dictionary items)
- Queries can be saved for future use
- Retrieved data is displayed in a spreadsheet or table, and can be manipulated to automatically generate extra columns based upon fields, calculations and formulae
- Field associations are retained
- Calculations using meta-columns on the result-set take account of multi-values.
- Report designer utilizes multi-values
- Option to retain multi-values when exporting
- Word mail-merge will utilize multi-values (e.g., in the address line)
- Dictionary builder for create/amending host based items (subject to security settings)
- Support for exploded selections; support for indices
- Multivalue-aware break-point support in the result set and report designer
- Options for sample runs and prompt levels
- Retrieve parser for converting TCL statements

WYSIWYG Report Designer

- Various reports can be generated automatically:
 - Standard Column Report
 - Combination Report for controlling multi-values
 - Form Report
 - Mailing Labels
 - Disk labels & charts
- Fonts, alignment, print areas, etc., can be adjusted within the Report Designer
- Experts and Function Builders guide the user through complex Dictionary Item creation
- Data can be copied to the Clipboard and pasted into a variety of delimited formats, such as MS Access
- Support for multi-section reports
- New report header, report footer, record header, record footer and value line sections
- Support for complex multi-value break point management and break headers
- Optional sections dependent on the data
- Labels and Forms (both US & UK Avery label support)
- Full Print Preview
- Graphics and Barcode Support
- Report serialization

Shortcuts

- More advanced users (System Administrators) can create standard system wide queries that can be used by multiple users.
- A shortcut can be created on users' desktops that, when clicked, will run, display or print a number of standard reports
- A local collection of stored "favorite" query definitions can be organized into catalogs

Exporting to Office Applications

- Flexible Export Library
- Published export definition (allowing you to develop in-house exports)
- Support for:
 - MS Word mail merge
 - MS Word document
 - MS Excel
 - MS Access 2000
 - Delimited file
 - HTML
 - HTML page set
 - XML
 - ADO/OLEDB
- When exporting choice of Normal (MV), Compressed and Expanded Value Modes

Offline Operation

- Create off-line queries complete with result, report and query definition
- Send report output to colleagues for offline viewing
- View offline reports in a browser
- Automation and Batch Control
- OLE Automation interface for full product control
- Enhanced script language

Security

- The System Manager controls user access with a Windows-based Administration client. This allows creation of reporting accounts, restriction of files and items per user within the account as well as maintaining audit trails.
- mvQuery can use "database" select lists as well as powerful database programs or paragraphs which can run before and after a query to either populate a work-file or create a select list.

For More Information

For more information on Aprtron's Higher Education Solutions contact your representative at:

Aprtron Corporation
25 Hanover Road
Florham Park, NJ 07932

1-973-822-0700 voice
1-973-822-3234 facsimile

or send a note to sales@aptron.com

APTRON

www.aptron.com

Copyright 2002 Sandri Technologies, Inc.

mvQuery is a trademark of MMT Computing, plc.. **APTRON** and **AIMS** are registered marks of Aprtron Corporation. **CampusWEB** and **CAMPUS** are trademarks of Aprtron Corporation. All other products or company names mentioned are trademarks or registered trademarks of their respective companies.